



MILTHORP APARTMENTS POOL ROAD

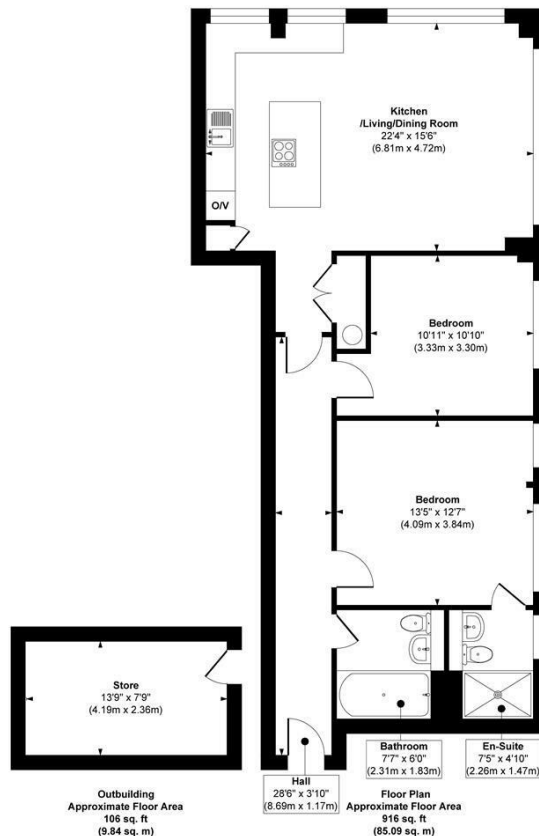
LEEDS, LS21 1GG

£295,000
LEASEHOLD

Welcome to Milthorp... A gated development of stunning riverside Apartments, which boasts high specification, allocated parking, and secure basement storage. Final apartments remaining, ready for immediate occupancy!

MONROE

SELLERS OF THE FINEST HOMES



Approx. Gross Internal Floor Area 1022 sq. ft / 94.93 sq. m (Including Outbuilding)

Illustration for identification purposes only, measurements are approximate, not to scale.

Copyright © Show Home.



Energy Efficiency Rating		
	Current	Potential
Very energy efficient - lower running costs		
(92 plus) A		
(81-91) B		
(69-80) C		
(55-68) D	71	71
(39-54) E		
(21-38) F		
(1-20) G		
Not energy efficient - higher running costs		
England & Wales	EU Directive 2002/91/EC	

Agents Note: Whilst every care has been taken to prepare these particulars, they are for guidance purposes only. All measurements are approximate and are for general guidance purposes only and whilst every care has been taken to ensure their accuracy, they should not be relied upon and potential buyers/tenants are advised to recheck the measurements

Land & New Homes
1-3 The Avenue
Alwoodley
Leeds
West Yorkshire
LS17 7BD

0113 350 1444
landandnewhomes@monroestateagents.com
www.monroestateagents.com

MONROE

SELLERS OF THE FINEST HOMES